

University of South Carolina DeSaussure E&G Window Replacement Project



147 Wappoo Creek Drive
Suite 400
Charleston, SC 29412
843.762.2222
843.762.2300

State Project Number:H27-6117

Project Number:18409

902 Sumter Street
Columbia, SC 29208

CONSTRUCTION DOCUMENTS

02/25/2019

DRAWING INDEX

Sheet Number	Sheet Name
--------------	------------

GENERAL

G000	COVER SHEET
G001	CODE REVIEW
G002	CODE REVIEW
G101	LIFE SAFETY PLAN - FIRST FLOOR
G102	LIFE SAFETY PLAN - SECOND FLOOR
G103	LIFE SAFETY PLAN - THIRD FLOOR

DEMOLITION

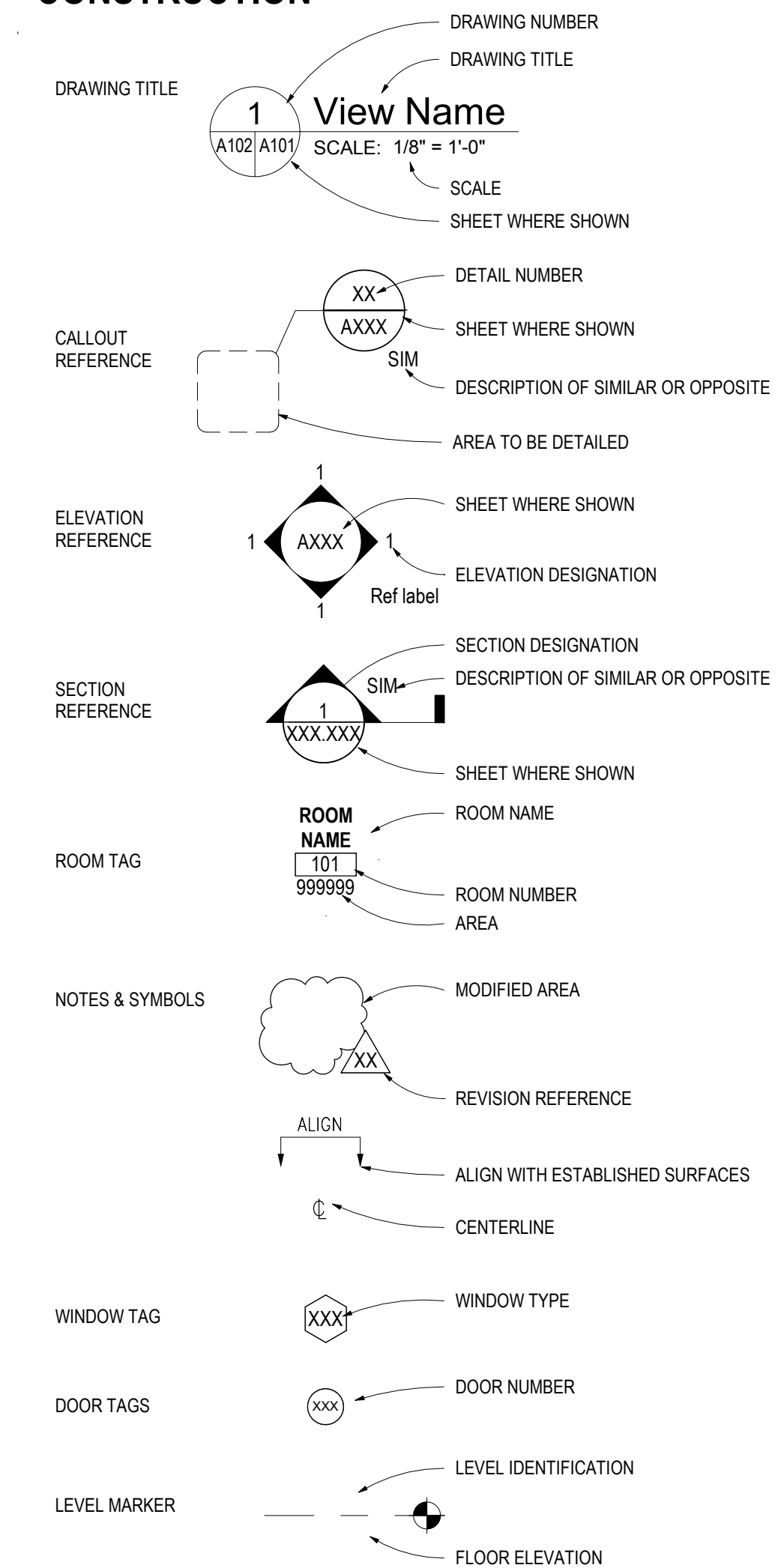
D101	DEMOLITION PLAN - FIRST FLOOR
D102	DEMOLITION PLAN - SECOND FLOOR
D103	DEMOLITION PLAN - THIRD FLOOR
D300	DEMOLITION ELEVATIONS
D301	DEMOLITION ELEVATIONS

ARCHITECTURAL

A101	FLOOR PLAN - FIRST FLOOR
A102	FLOOR PLAN - SECOND FLOOR
A103	FLOOR PLAN - THIRD FLOOR
A300	BUILDING ELEVATIONS
A301	BUILDING ELEVATIONS
A600	DOOR SCHEDULE AND TYPES
A601	WINDOW SCHEDULE AND TYPES
A602	DOOR AND WINDOW DETAILS

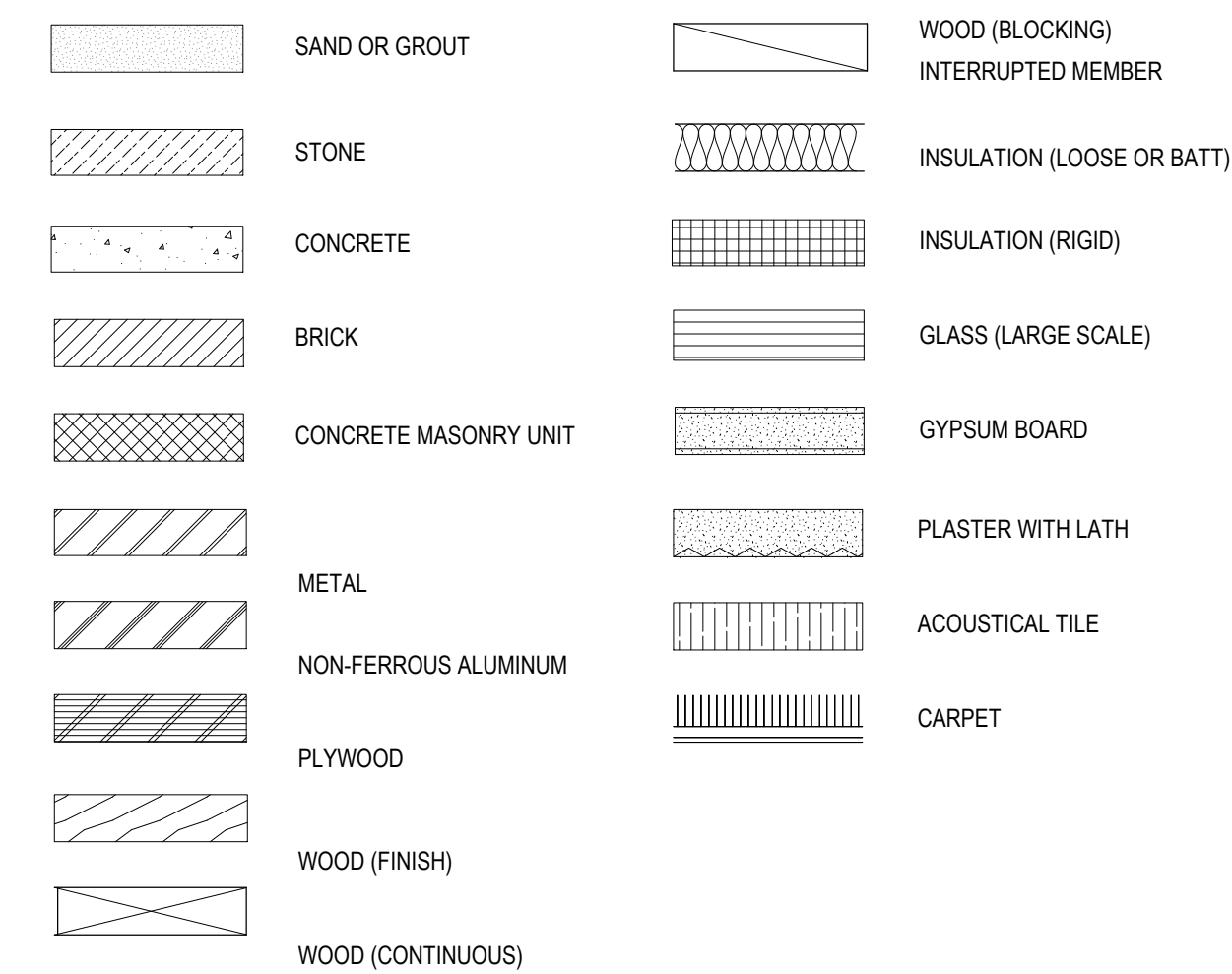
GRAPHIC SYMBOLS

CONSTRUCTION



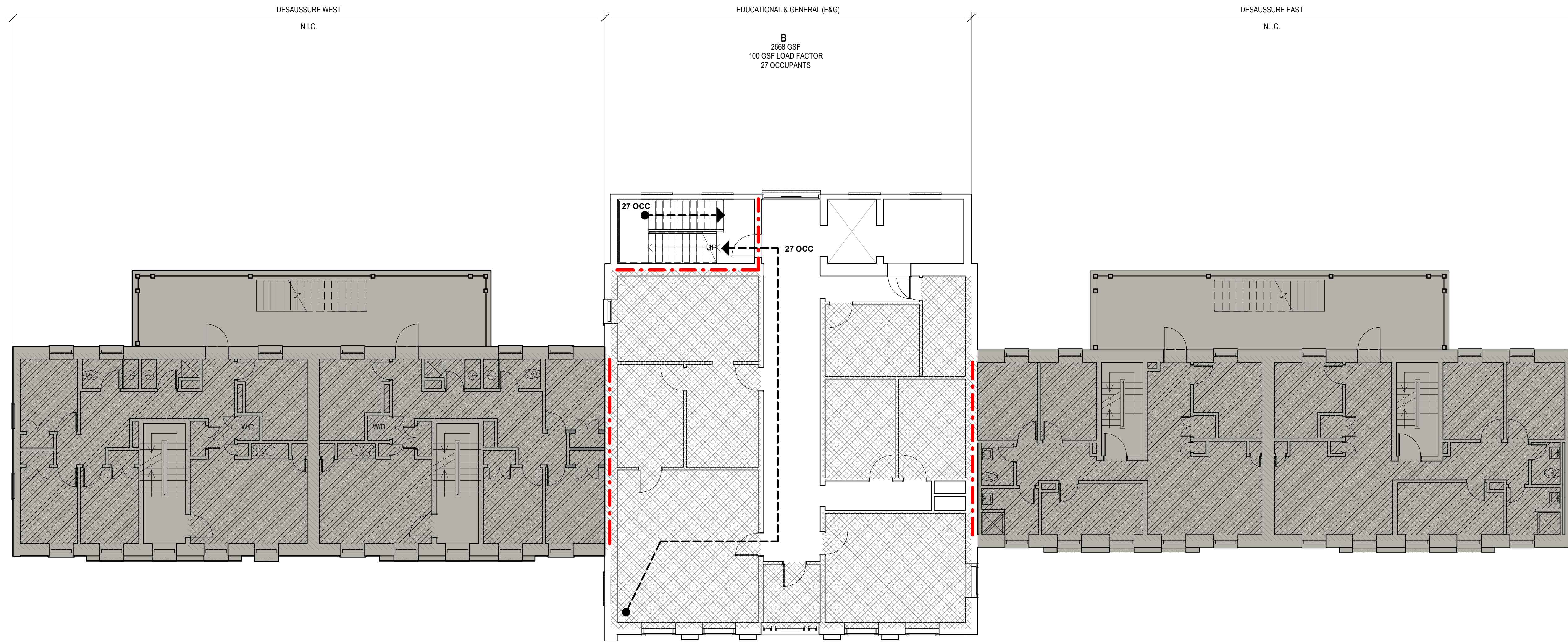
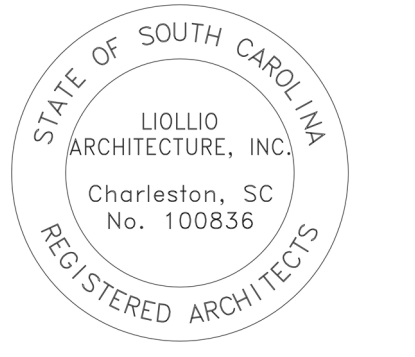
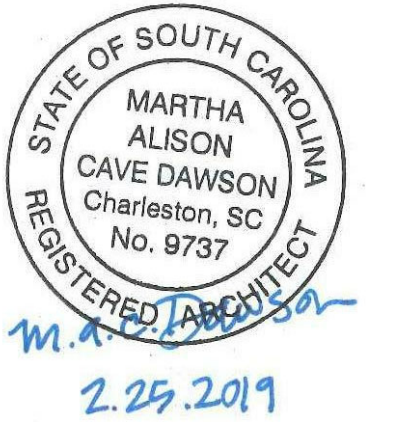
GRAPHIC SYMBOLS

SECTION INDICATIONS





147 Wappoo Creek Drive
Suite 400
Charleston, SC 29412
P 843.762.2222



1 LIFE SAFETY PLAN - DESSAUSURE LEVEL 02
G102 SCALE: 1/8" = 1'-0"

LIFE SAFETY PLAN LEGEND

- SYMBOLS**
- 1 HR RATED WALL (ASSUMED)
 - EGRESS OCCUPANT LOAD
 - PRIMARY EGRESS
- OCCUPANCY TYPES**
- RESIDENTIAL (R-2)
 - BUSINESS (B)
 - CIRCULATION
 - NOT IN CONTRACT (N.I.C.)

Revision	Date	Description

University of South Carolina
DeSaussure E&G Window Replacement Project

902 Sumter Street
Columbia, SC 29208

State Project Number: H27-6117
Project Number: 18409
Checked By: JMW
Drawn By: ACD
Date: 02/25/2019
Scale: 1/8" = 1'-0"

G102
LIFE SAFETY PLAN - SECOND FLOOR

